

Fun With Math

Complete by finding the value of each symbol

$$\text{Bug} \times \text{Shopping Cart} = 99$$

$$\text{Bug} \times \text{Bug} = 121$$

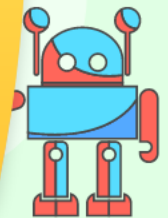
$$117 \div \text{Water Glass} = \text{Shopping Cart}$$

$$\text{Water Glass} - \text{Shopping Cart} = ?$$

$$\text{Bug} = \underline{\quad}$$

$$\text{Shopping Cart} = \underline{\quad}$$

$$\text{Water Glass} = \underline{\quad}$$



$$\text{Book} + \text{Tractor} = \text{Flower}$$

$$\text{Book} \times \text{Book} = 36$$

$$\text{Tractor} - \text{Book} = 3$$

$$\text{Flower} \times \text{Tractor} = ?$$

$$\text{Flower} = \underline{\quad}$$

$$\text{Tractor} = \underline{\quad}$$

$$\text{Book} = \underline{\quad}$$

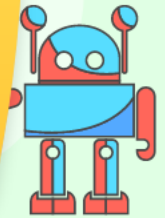


Answer Key

Complete by finding the value of each symbol

$$\begin{array}{l} 11 \\ \text{Bug} \times \text{Shopping Cart} = 99 \\ 11 \\ \text{Bug} \times \text{Bug} = 121 \\ 117 \div \text{Water Glass} = \text{Shopping Cart} \quad 9 \\ 13 \\ \text{Water Glass} - \text{Shopping Cart} = 4 \end{array}$$

$$\begin{array}{l} \text{Bug} = 11 \\ \text{Shopping Cart} = 9 \\ \text{Water Glass} = 13 \end{array}$$



$$\begin{array}{l} 6 \\ \text{Book} + \text{Tractor} = \text{Flower} \quad 15 \\ 6 \\ \text{Book} \times \text{Book} = 36 \\ 9 \\ \text{Tractor} - \text{Book} = 3 \\ 15 \\ \text{Flower} \times \text{Tractor} = 135 \end{array}$$

$$\begin{array}{l} \text{Flower} = 15 \\ \text{Tractor} = 9 \\ \text{Book} = 6 \end{array}$$

