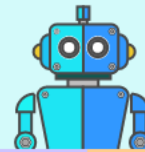


Fun with Math

Balance the tiles

Instruction: Switch one tile from A to B and another from B to A and make the product of the tiles equal for both A and B. Write your final answer on the tiles.

Make the product equal for both A and B



A			B		
3	X	6	4	X	2

A			B		
	X			X	

Make the product equal for both A and B



A			B		
5	X	10	4	X	2


A			B		
	X			X	

Answer Key

Balance the tiles

Instruction: Switch one tile from A to B and another from B to A and make the product of the tiles equal for both A and B. Write your final answer on the tiles.

Make the product equal for both A and B




Product = 12

A			B		
3	X	6	4	X	2

A			B		
2	X	6	4	X	3

The diagram shows two sets of math tiles. The first set shows two groups, A and B. Group A has tiles with numbers 3, X, and 6. Group B has tiles with numbers 4, X, and 2. A second set shows the result after swapping one tile from A to B and one from B to A. In group A, the number 3 is replaced by 2. In group B, the number 2 is replaced by 3. A callout box above the second set indicates that the product for both groups is now 12.

Make the product equal for both A and B



Product = 20

A			B		
5	X	10	4	X	2

A			B		
5	X	4	10	X	2

The diagram shows two sets of math tiles. The first set shows two groups, A and B. Group A has tiles with numbers 5, X, and 10. Group B has tiles with numbers 4, X, and 2. A second set shows the result after swapping one tile from A to B and one from B to A. In group A, the number 10 is replaced by 4. In group B, the number 4 is replaced by 10. A callout box above the second set indicates that the product for both groups is now 20.